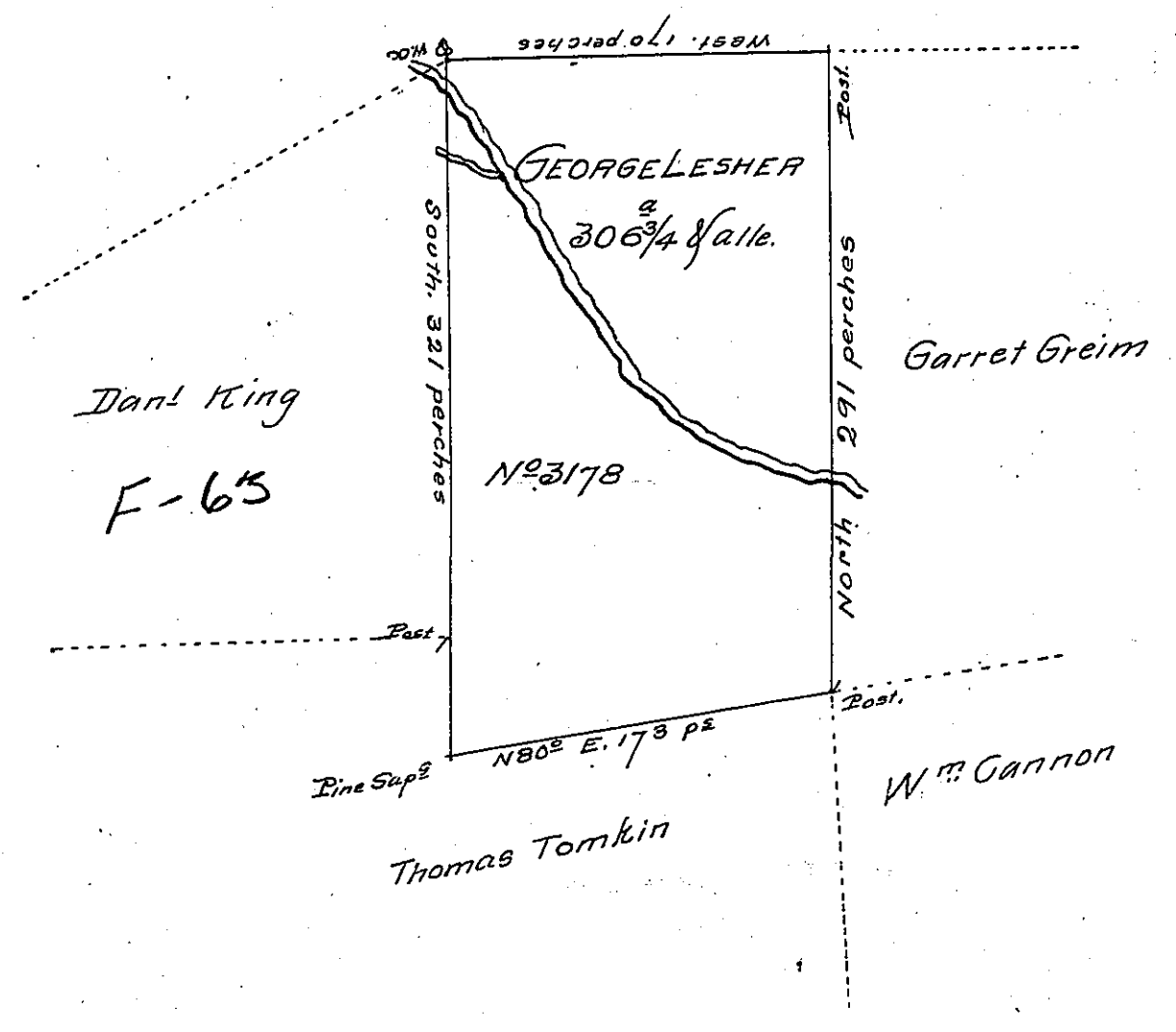


B-455



A Draught of a Tract of Land called Greenwich situate on the waters of the Northerly branches of Kawanishoning or Briar Creek adjoining land surveyed for Garret Greim in the County of Northumberland containing three hundred and six acres and three quarters of an acre besides the usual allowance of 6 p Cent for roads. Surveyed the 17th day of June 1773 for George Lesher in pursuance of an Order dated the 27th day of April 1769. Nº 3178

Chas Stewart Dep. Sur.

To
 John Lukens Esq
 Survey^r Gen^l

IN TESTIMONY that the above is a copy of the original remaining on file in the Department of Internal Affairs of Pennsylvania, made conformably to an Act of Assembly approved the 16th day of February, 1833, I have hereunto set my Hand and caused the Seal of said Department to be affixed at Harrisburg, this twenty-second day of October 1906

Geo D Brown
 Secretary of Internal Affairs.